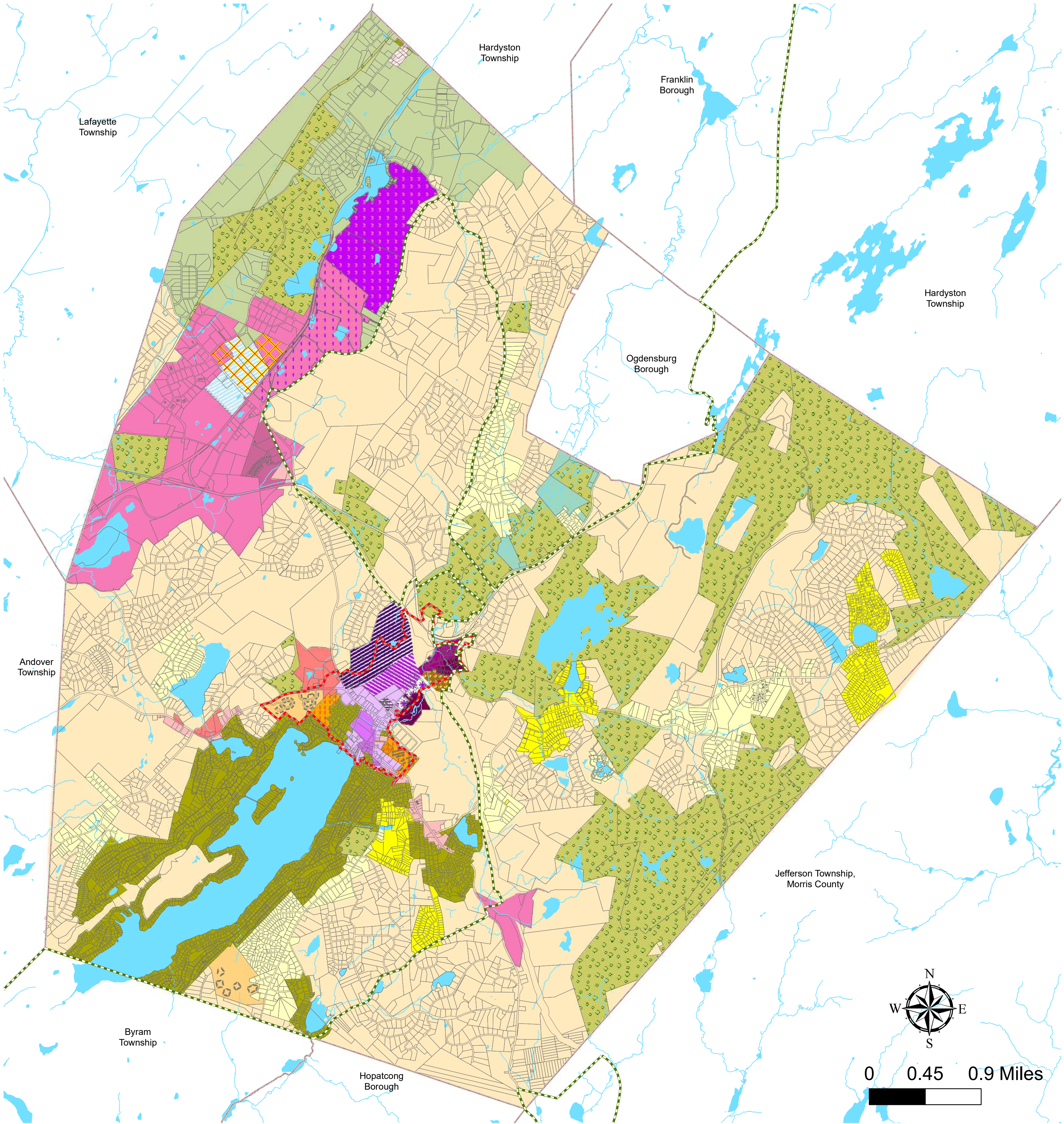


Sparta Township Zoning Map



- | | | | | | |
|--|---|--|---|--|--|
| | C-1: Commercial | | R-1: Residential (45000sf) | | TCC: Town Center Commercial |
| | C-2: Commercial Professional | | R-2: Residential (25000sf) | | TCCO: Town Center Commercial Office |
| | C1-H: Commercial Historic | | R-3: Residential (8000/14000sf) | | TCLC: Town Center Limited Commercial |
| | ED: Economic Development | | R-4: Town Center Residential Professional | | TCLM: Town Center Lower Main Street |
| | ED-1: Economic Development/ Low-Moderate Cost Housing | | RC-1: Rural Conservation/ Residential (5acre) | | TCPB: Town Center Professional Business |
| | MF: Multi-Family Zone | | RC-2: Rural Conservation/ Residential (5acre) | | TCCAH: Town Center Commercial/Age-Restricted Housing |
| | MF-1: Multi-Family Zone 1 | | RR: Rural Residential (5acre) | | TCMSB: Town Center Main Street Business |
| | MF-2: Multi-Family Zone 2 | | PDRM-2: Planned Development Resource Management 2 | | Sparta Town Center |
| | MF-3: Multi-Family Zone 3 | | PDRM-1: Planned Development Resource Management 1 | | Water Bodies |
| | OSGU: Open Space/ Government Use | | Planned Village Core | | Highlands Preservation Area Boundary |
| | PCD: Planned Commercial Development | | | | |

REVISIONS	
10/22/2002	ADOPTED
3/23/2004	REVISED
2/22/2005	REVISED
5/24/2011	REVISED
3/15/2012	REVISED
10/25/2013	REVISED
11/2/2016	REVISED

Zoning Map

SPARTA TOWNSHIP
Sussex County, New Jersey



October 25, 2013

Prepared For:
Sparta Township
Department of
Coommunity Development