

NOTES:

"THIS (MAP/PUBLICATION/REPORT) WAS DEVELOPED USING NEW JERSEY DEPARTMENT OF ENVIRONMENTAL PROTECTION GEOGRAPHIC INFORMATION SYSTEM DIGITAL DATA, BUT THIS SECONDARY PRODUCT HAS NOT BEEN VERIFIED BY NJDEP AND IS NOT STATE-AUTHORIZED."

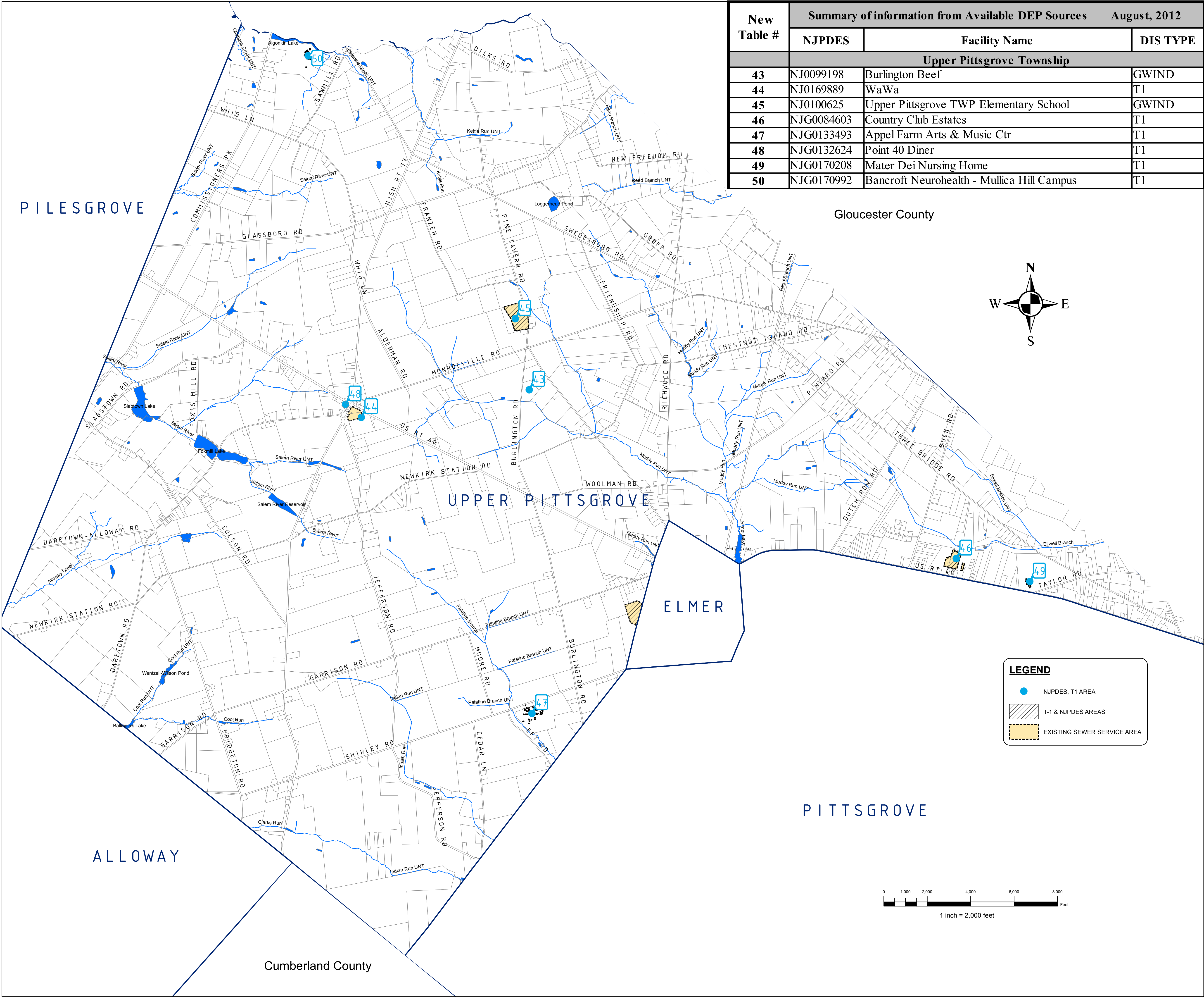
NO.	DATE	REVISION	BY:

WASTEWATER MANAGEMENT
PLAN PLANNING AREA - MAP 1
TOWNSHIP OF UPPER PITTSRGROVE
SALEM COUNTY
WASTEWATER MANAGEMENT PLAN
SALEM COUNTY, NEW JERSEY

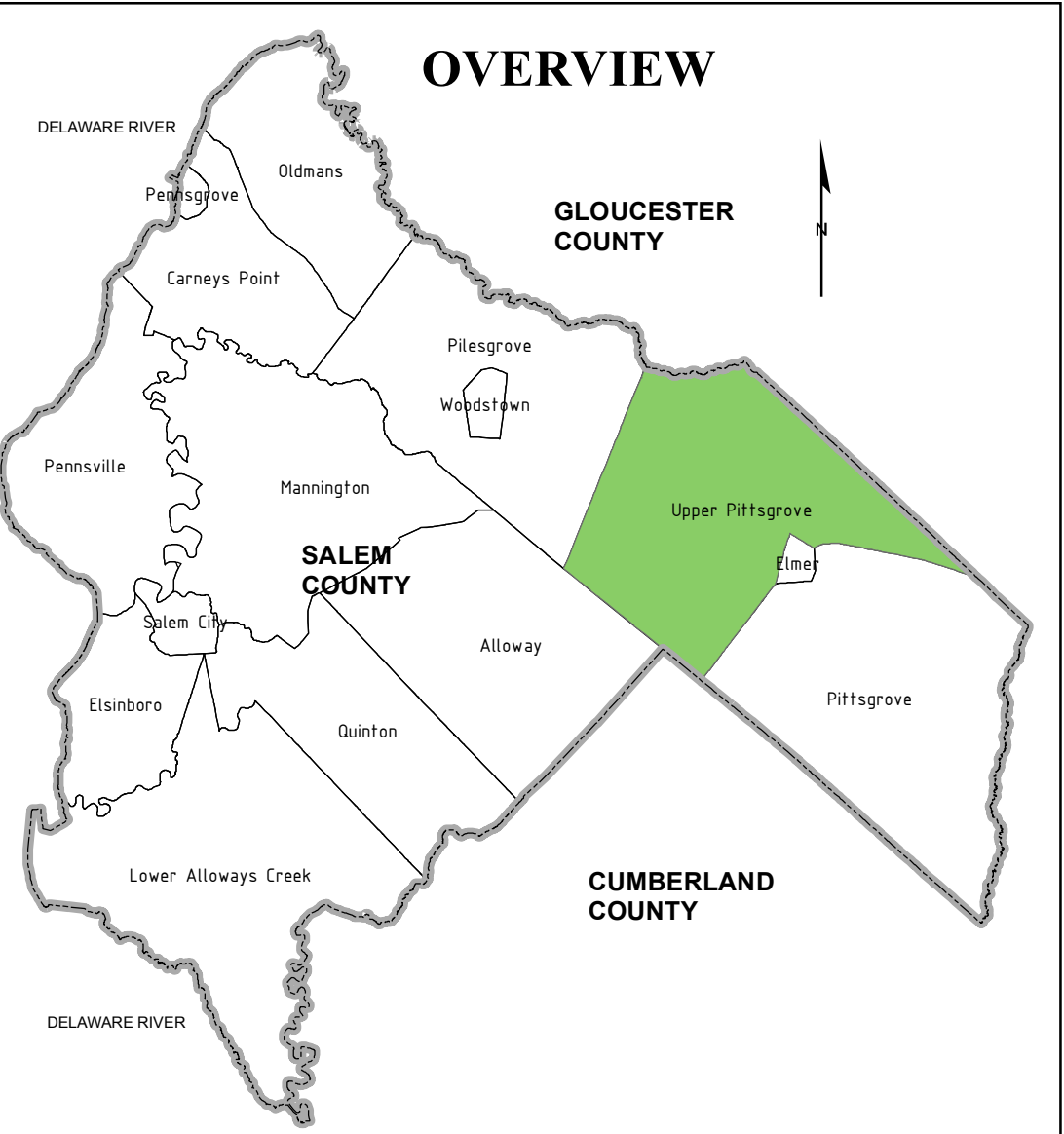


SALEM COUNTY DEPARTMENT OF
PLANNING AND AGRICULTURE
110 FIFTH STREET
SALEM, NEW JERSEY

SICKELS & ASSOCIATES, INC.			SHERWOOD MEWS 833 KINGS HIGHWAY WOODBURY, NEW JERSEY 08060-3110 NJ CERTIFICATE OF AUTHORIZATION No. GA27994900 856-848-6800 FAX 848-8520
DRAWN BY: DJP	DATE: 2-16-11	SHEET: 1 of 1	
CHECKED BY: DSP	DWG: F-SALEM WMP	FILE: 5363	



New Table #	Summary of information from Available DEP Sources		August, 2012
	NJPDES	Facility Name	DIS TYPE
Upper Pittsgrove Township			
43	NJ0099198	Burlington Beef	GWIND
44	NJ0169889	WaWa	T1
45	NJ0100625	Upper Pittsgrove TWP Elementary School	GWIND
46	NJG0084603	Country Club Estates	T1
47	NJG0133493	Appel Farm Arts & Music Ctr	T1
48	NJG0132624	Point 40 Diner	T1
49	NJG0170208	Mater Dei Nursing Home	T1
50	NJG0170992	Bancroft Neurohealth - Mullica Hill Campus	T1



NOTES:

"THIS (MAP/PUBLICATION/REPORT) WAS DEVELOPED USING NEW JERSEY DEPARTMENT OF ENVIRONMENTAL PROTECTION GEOGRAPHIC INFORMATION SYSTEM DIGITAL DATA, BUT THIS SECONDARY PRODUCT HAS NOT BEEN VERIFIED BY NJDEP AND IS NOT STATE-AUTHORIZED."

1.	12-18-13	REV NJPDES-T1 AREAS & TABLE PER NJDEP COMMENTS	DJP
NO.	DATE	REVISION	BY:

EXISTING FACILITIES AND SERVICE AREA - MAP 2

TOWNSHIP OF UPPER PITTSGROVE
SALEM COUNTY
WASTEWATER MANAGEMENT PLAN
SALEM COUNTY, NEW JERSEY



SALEM COUNTY DEPARTMENT OF
PLANNING AND AGRICULTURE
110 FIFTH STREET
SALEM, NEW JERSEY

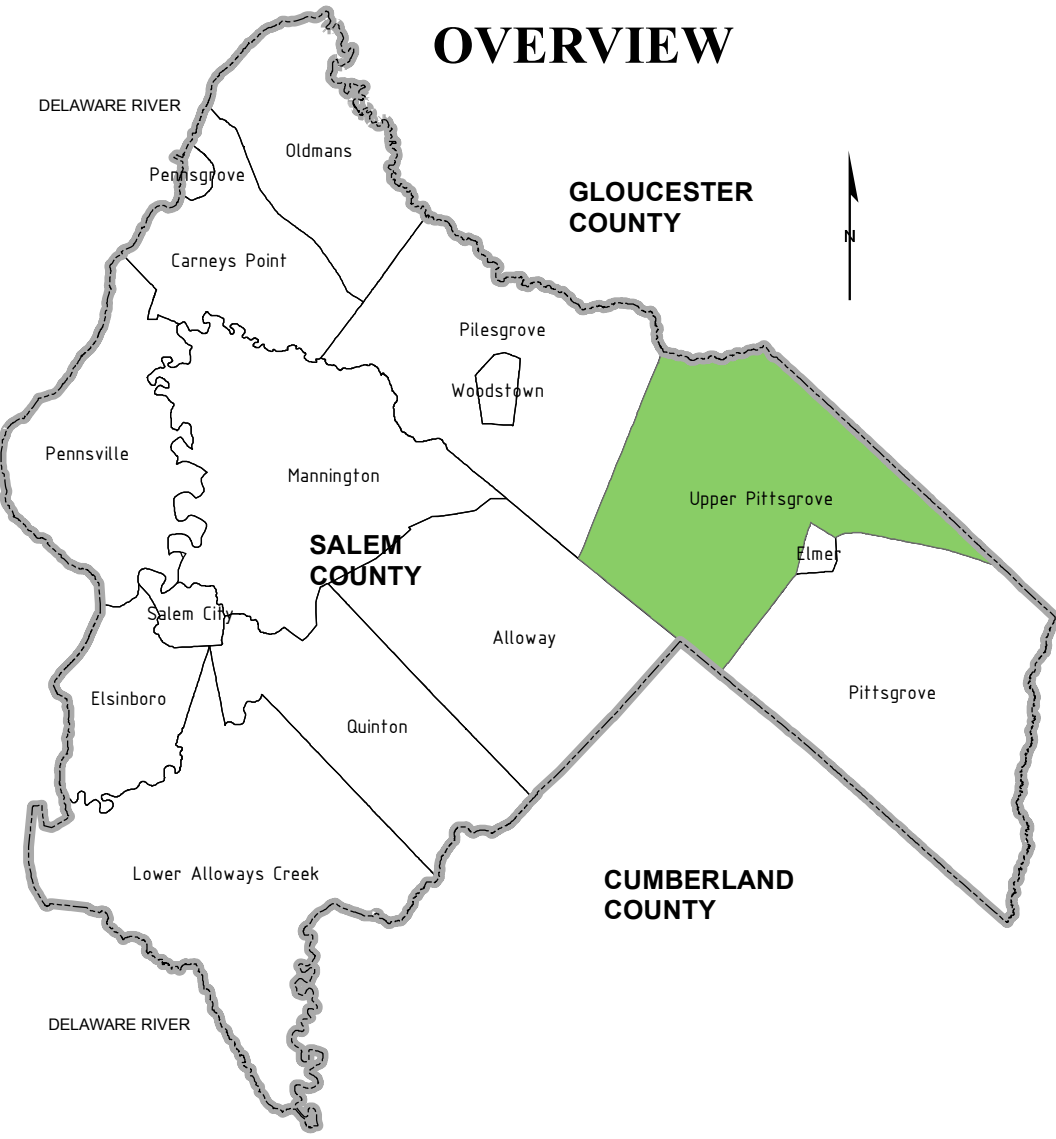
SICKELS &

ASSOCIATES, INC.

SHERWOOD MEWS
833 KINGS HIGHWAY
WOODBURY, NEW JERSEY 08096-3110
NJ CERTIFICATE OF AUTHORIZATION
No. GA27994900
856-848-6800
FAX 848-8520

DRAWN BY: DJP	DATE: 2-18-11	SHEET: 1 of 1
CHECKED BY: DSP	DWG: F-SALEM WMP	FILE: 5363

Table #	Summary of information from Available DEP Sources		August, 2012
	NJPDES	Facility Name	DIS TYPE
10	NJ0099571	South Jersey Hospital	GWIND
43	NJ0099198	Burlington Beef	GWIND
44	NJ0169889	WaWa	T1
45	NJ0100625	Upper Pittsgrove TWP Elementary School	GWIND
46	NJG0084603	Country Club Estates	T1
47	NJG0133493	Appel Farm Arts & Music Ctr	T1
48	NJG0132624	Point 40 Diner	T1
49	NJG0170208	Mater Dei Nursing Home	T1
50	NJG0170992	Bancroft Neurohealth - Mullica Hill Campus	T1



NOTES:

"PLEASE NOTE THAT WHERE THE VISUAL DEPICTION OF SSA DOES NOT EXPLICITLY INDICATE THE SPECIFIC SEWER SERVICE AREA ASSOCIATED WITH THE WASTEWATER TREATMENT FACILITIES, THE STATEWIDE DIGITIZED SEWER SERVICE AREA MAPPING DOES. THE PUBLICALLY AVAILABLE SEWER SERVICE AREA MAPPING IS AVAILABLE FOR VIEWING ON NJ GEO-WEB AT [HTTP://WWW.NJ.GOV/DEP/GIS/GEOWEBSPASH.HTM](http://www.nj.gov/dep/gis/geoweb/splash.htm). IT IS ALSO AVAILABLE FOR DOWNLOAD TO USE IN ARCGIS AT [HTTP://WWW.NJ.GOV/DEP/GIS/STATESHP.HTML](http://www.nj.gov/dep/gis/stateshp.html)."

"THIS (MAP/PUBLICATION/REPORT) WAS DEVELOPED USING NEW JERSEY DEPARTMENT OF ENVIRONMENTAL PROTECTION GEOGRAPHIC INFORMATION SYSTEM DIGITAL DATA, BUT THIS SECONDARY PRODUCT HAS NOT BEEN VERIFIED BY NJDEP AND IS NOT STATE-AUTHORIZED."

3.	9-2-15	ADDED NOTE PER NJDEP COMMENTS	DJP
2.	7-15-14	REV PER NJDEP COMMENTS	DJP
1.	12-18-13	REV NJPDES-T1 AREAS & TABLE PER NJDEP COMMENTS	DJP
NO.	DATE	REVISION	BY:

FUTURE SERVICE AREA - MAP 3

TOWNSHIP OF UPPER PITTSGROVE
SALEM COUNTY
WASTEWATER MANAGEMENT PLAN
SALEM COUNTY, NEW JERSEY



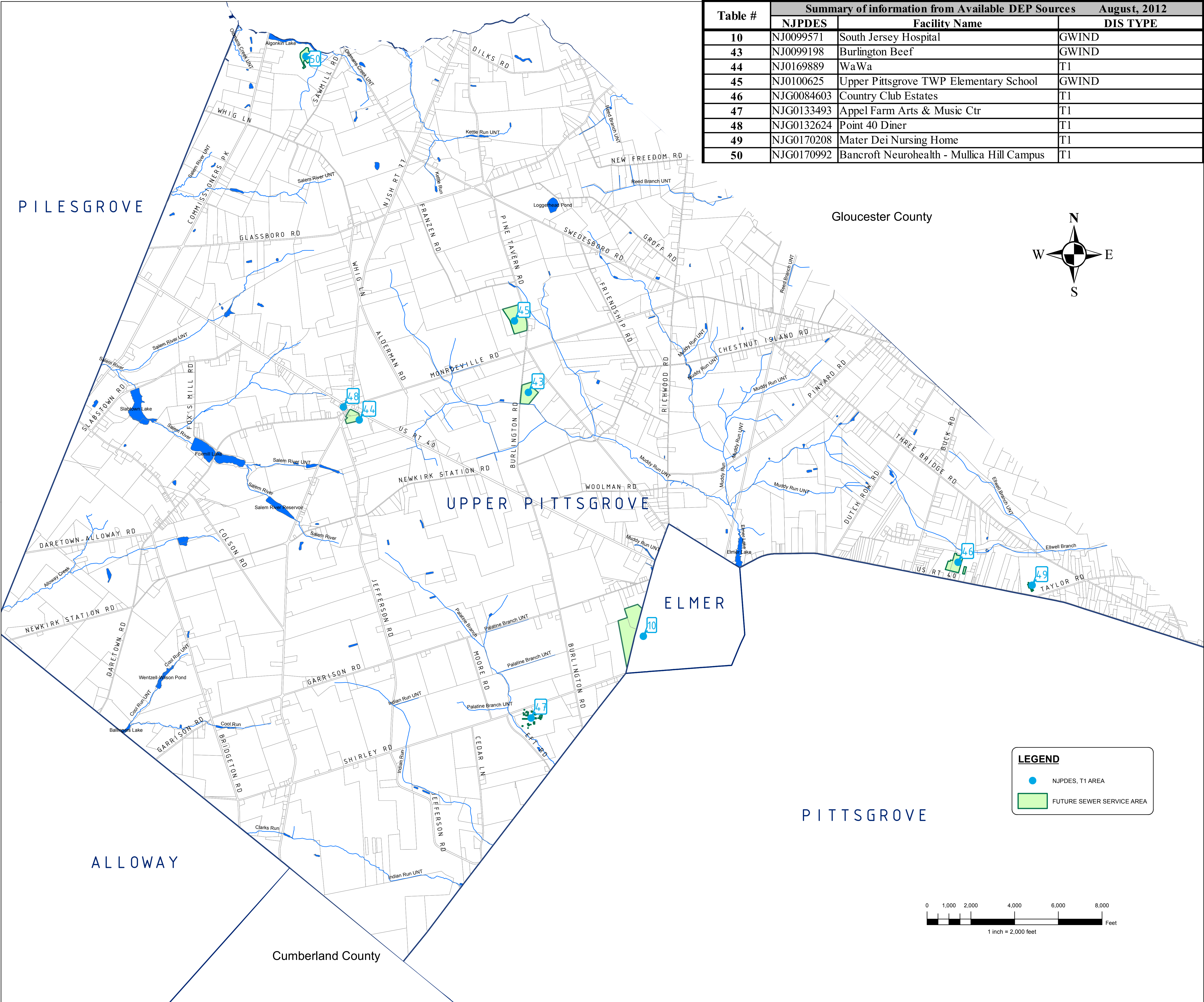
SALEM COUNTY DEPARTMENT OF
PLANNING AND AGRICULTURE

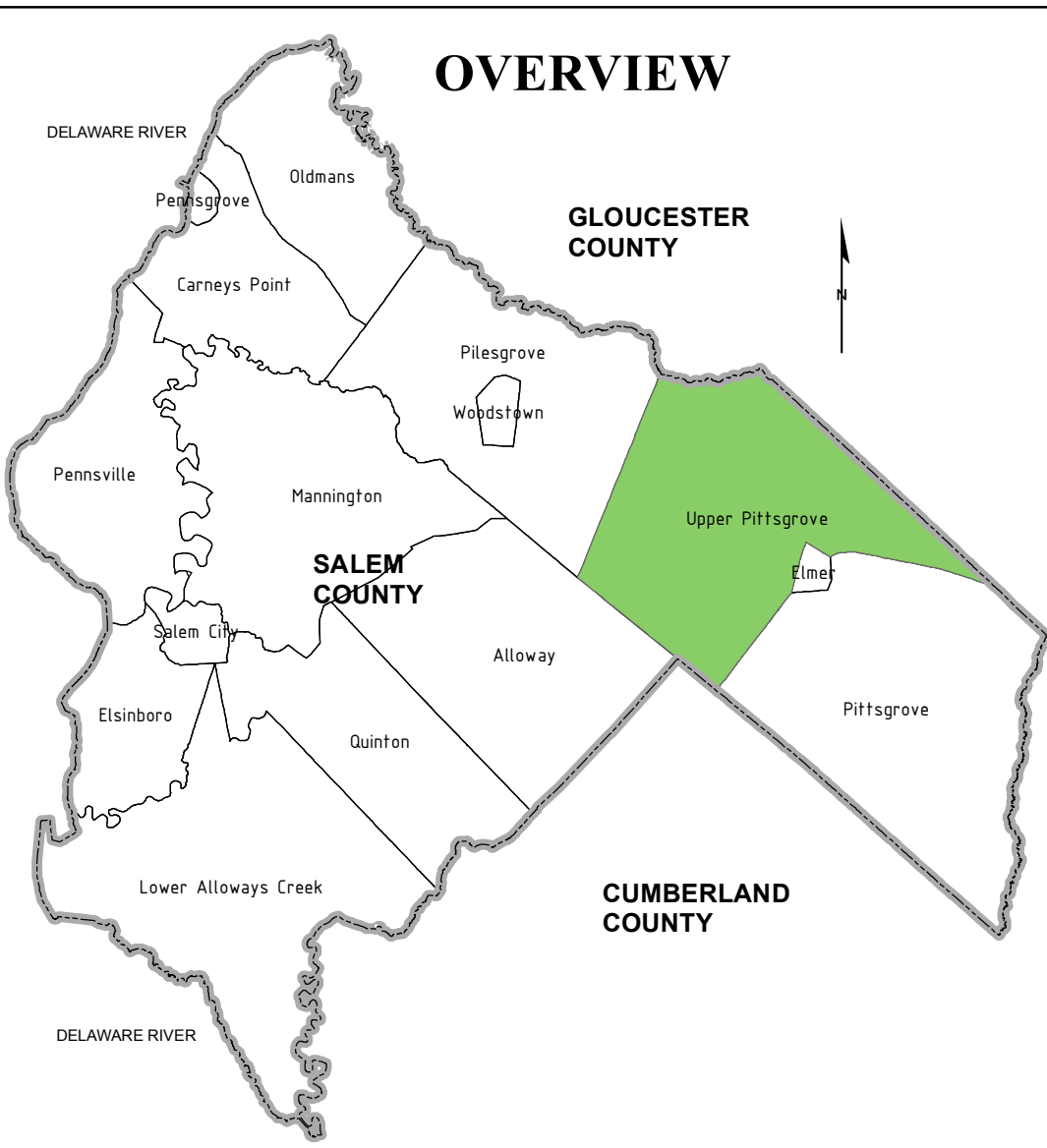
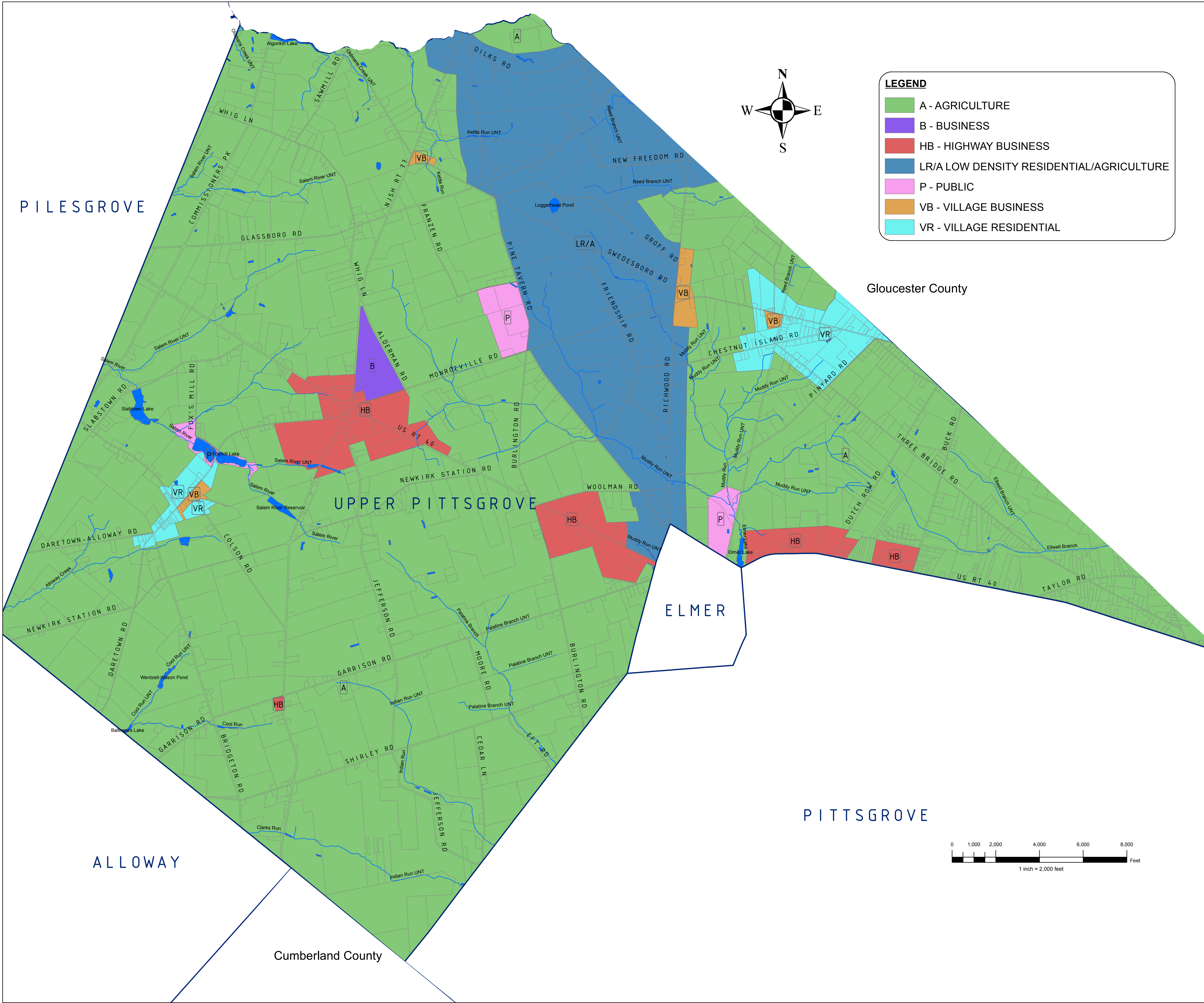
110 FIFTH STREET
SALEM, NEW JERSEY

**SICKELS &
ASSOCIATES, INC.**

SHERWOOD MEWS
833 KINGS HIGHWAY
WOODBURY, NEW JERSEY 08096-3110
NJ CERTIFICATE OF AUTHORIZATION
No. GA27994900
856-848-6800
FAX 848-8520

DRAWN BY: DJP	DATE: 2-18-11	SHEET: 1 of 1
CHECKED BY: DSP	DWG: F-SALEM WMP	FILE: 5363





NOTES:

ZONING MAP TAKEN FROM SALEM COUNTY DATABASE FILE
DATED 12-8-10. ZONING MAP DATED 3-2006.

"THIS (MAP/PUBLICATION/REPORT) WAS DEVELOPED USING NEW JERSEY
DEPARTMENT OF ENVIRONMENTAL PROTECTION GEOGRAPHIC INFORMATION
SYSTEM DIGITAL DATA, BUT THIS SECONDARY PRODUCT HAS NOT BEEN
VERIFIED BY NJDEP AND IS NOT STATE-AUTHORIZED."

NO.	DATE	REVISION	BY:

REVISIONS

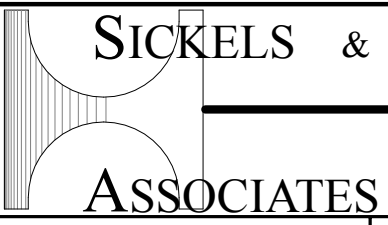
ZONING - MAP 4

TOWNSHIP OF UPPER PITTSRGROVE

SALEM COUNTY
WASTEWATER MANAGEMENT PLAN
SALEM COUNTY, NEW JERSEY

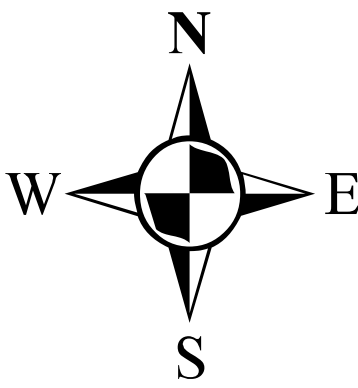
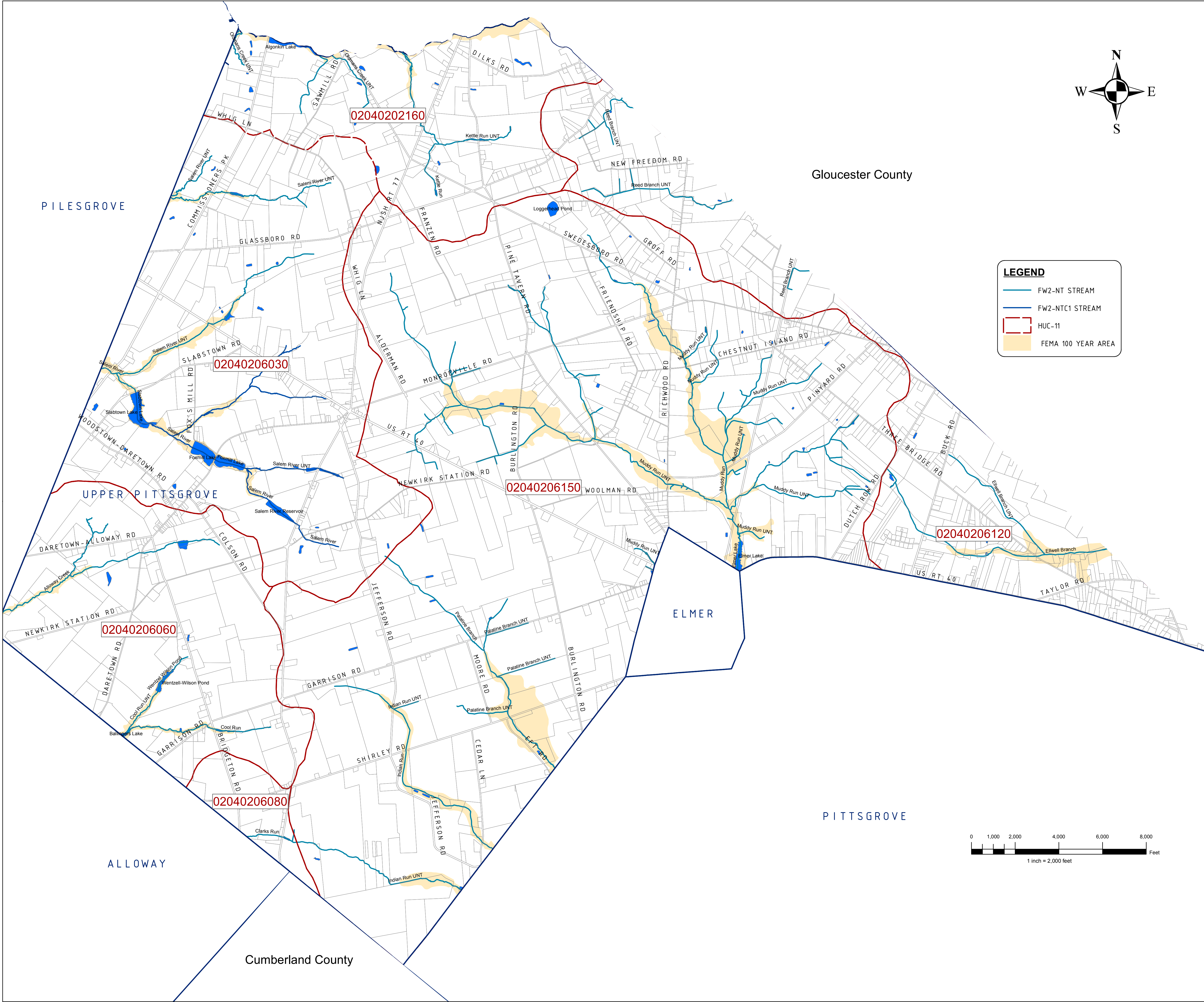


SALEM COUNTY DEPARTMENT OF
PLANNING AND AGRICULTURE
110 FIFTH STREET
SALEM, NEW JERSEY



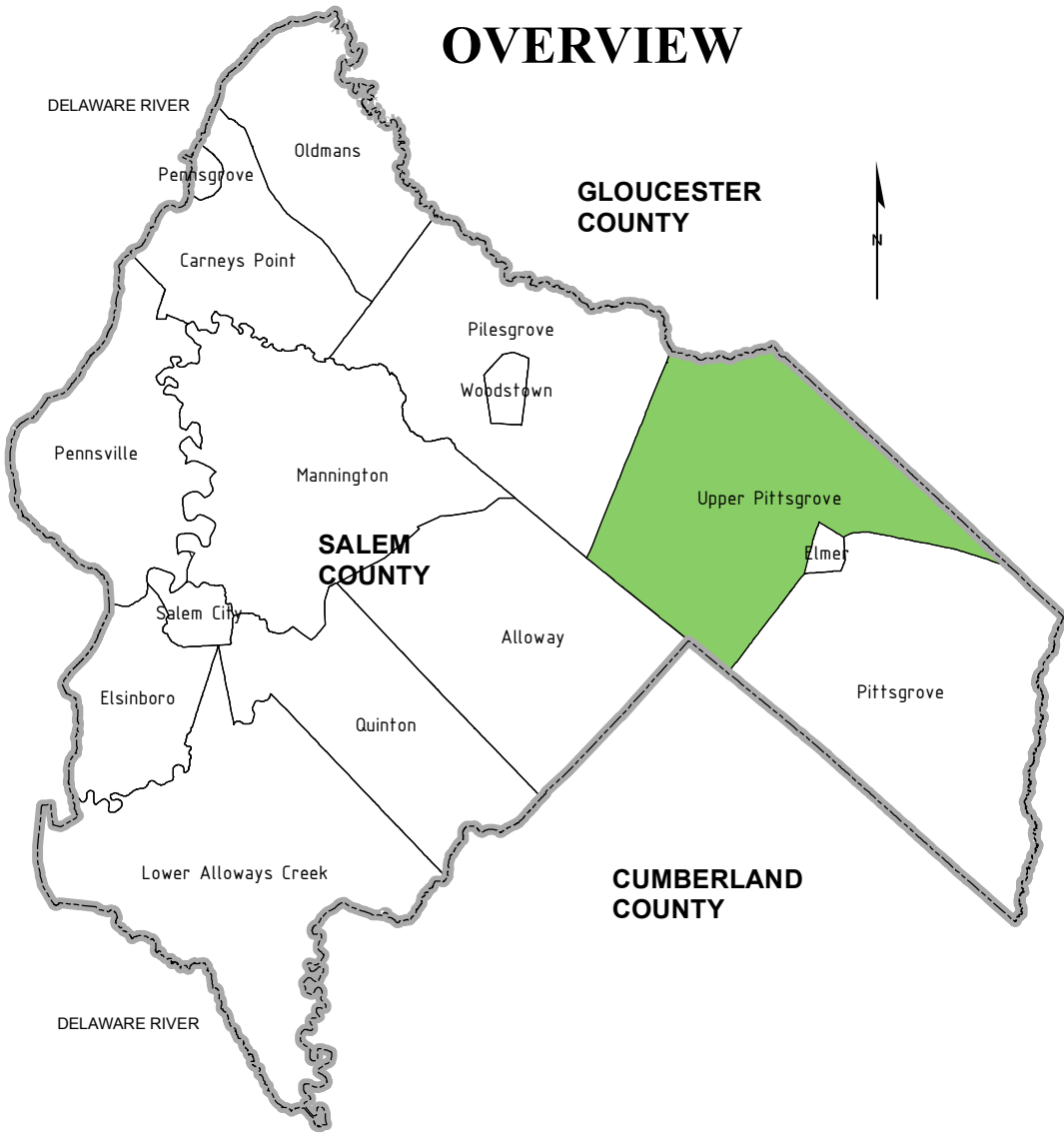
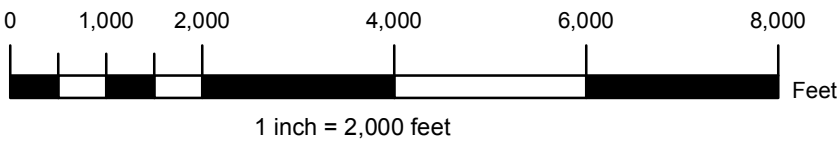
SHERWOOD MEWS
833 KINGS HIGHWAY
WOODBURY, NEW JERSEY 08096-3110
NJ CERTIFICATE OF AUTHORIZATION
No. GA27994900
856-848-6800
FAX 848-8520

DRAWN BY: DJP	DATE: 2-16-11	SHEET: 1 of 1
CHECKED BY: DSP	DWG: F-SALEM WMP	FILE: 5363



LEGEND

- FW2-NT STREAM
- FW2-NTC1 STREAM
- HUC-11
- FEMA 100 YEAR AREA



NOTES:

"DEVELOPMENT IN AREAS MAPPED AS WETLANDS, FLOOD PRONE AREAS, SUITABLE HABITAT FOR ENDANGERED AND THREATENED SPECIES AS IDENTIFIED ON THE DEPARTMENT'S LANDSCAPE MAPS OF HABITAT FOR ENDANGERED, THREATENED AND OTHER PRIORITY WILDLIFE AS RANK 3.4, AND 5, NATURAL HERITAGE PRIORITY SITES, RIPARIAN ZONES, STEEP SLOPES, OR DESIGNATED RIVER AREAS MAY BE SUBJECT TO SPECIAL REGULATION UNDER FEDERAL OR STATE STATUTES OR RULES, AND THAT INTERESTED PERSONS SHOULD CHECK WITH THE DEPARTMENT FOR THE LATEST INFORMATION. DEPICTION OF ENVIRONMENTAL FEATURES SHALL BE FOR GENERAL INFORMATION PURPOSES ONLY, AND SHALL NOT BE CONSTRUED TO DEFINE THE LEGAL GEOGRAPHIC JURISDICTION OF SUCH STATUTES OR RULES"

BASEMAP INFORMATION INCLUDING PARCELS, ROADS AND MUNICIPAL BOUNDARY TAKEN FROM THE SALEM COUNTY DATABASE FILE.

"THIS (MAP/PUBLICATION/REPORT) WAS DEVELOPED USING NEW JERSEY DEPARTMENT OF ENVIRONMENTAL PROTECTION GEOGRAPHIC INFORMATION SYSTEM DIGITAL DATA, BUT THIS SECONDARY PRODUCT HAS NOT BEEN VERIFIED BY NJDEP AND IS NOT STATE-AUTHORIZED."

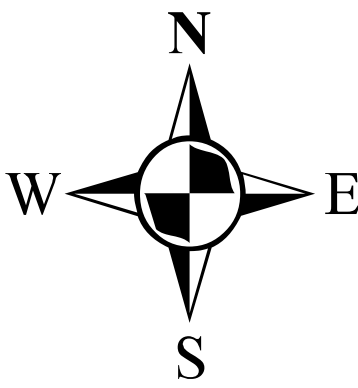
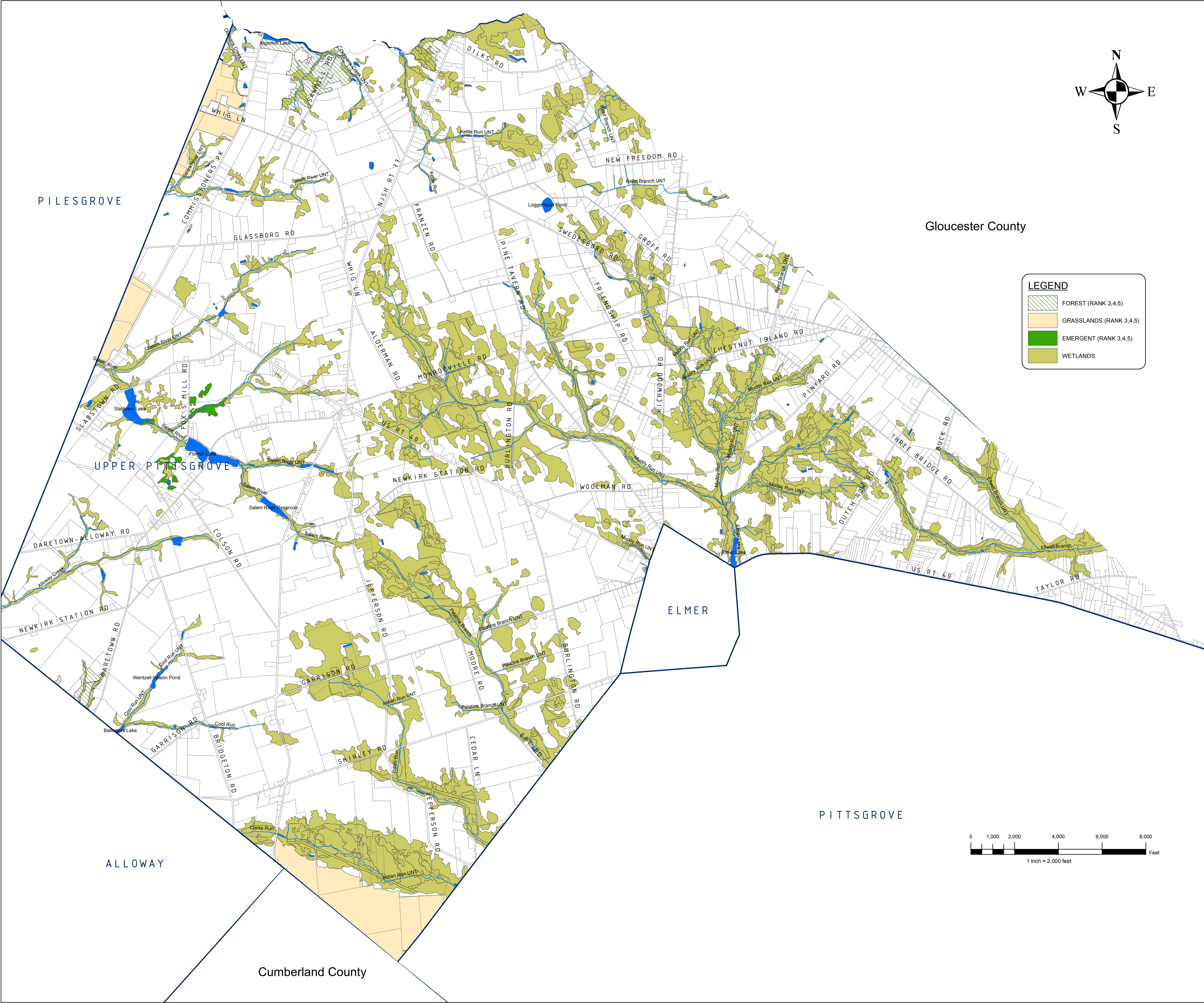
NO.	DATE	REVISION	BY:
REVISIONS			

ENVIRONMENTAL FEATURES - MAP 5A
HUC 11, FEMA AREAS
TOWNSHIP OF UPPER PITTSBORO
SALEM COUNTY
WASTEWATER MANAGEMENT PLAN
SALEM COUNTY, NEW JERSEY



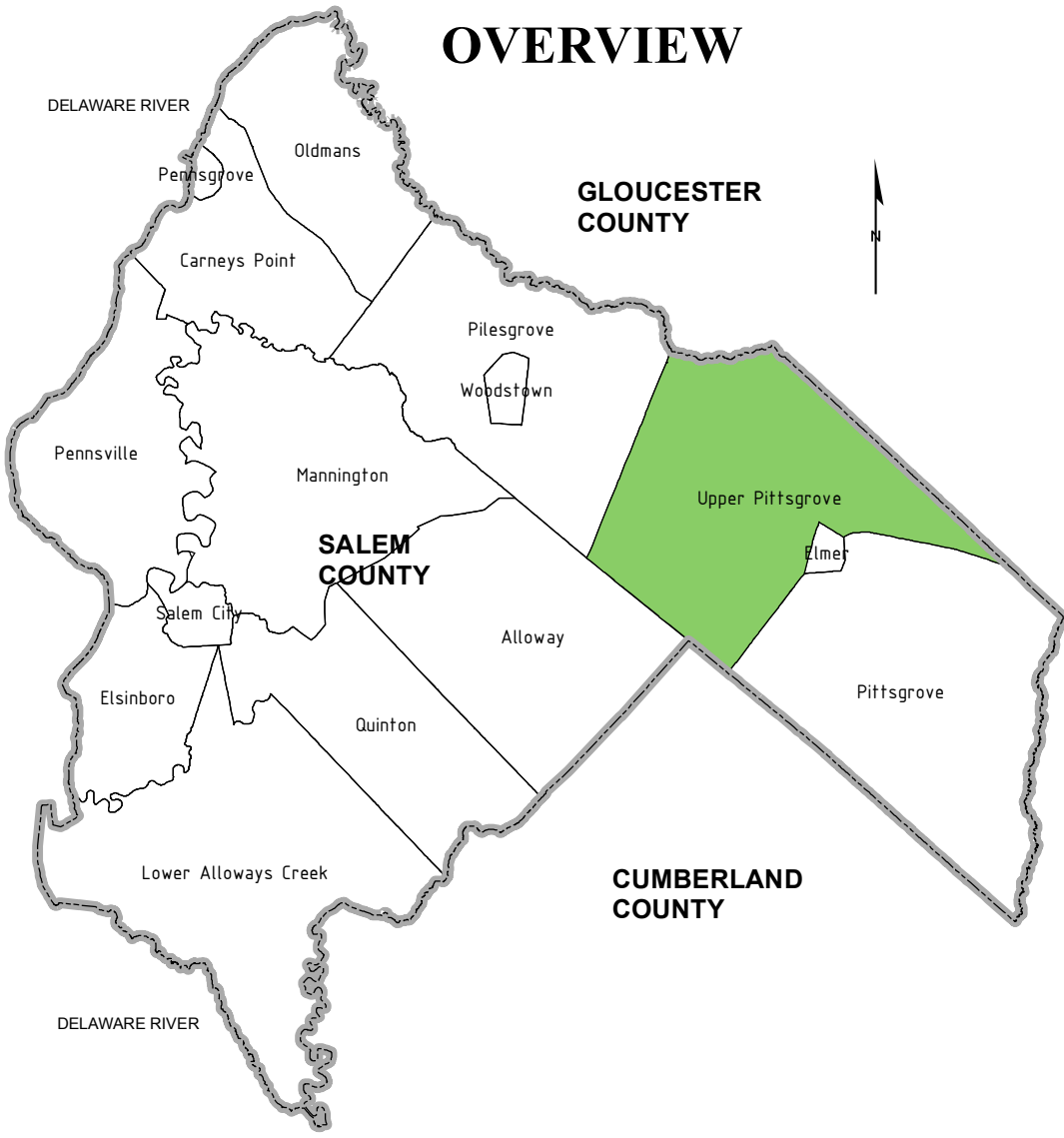
SALEM COUNTY DEPARTMENT OF
PLANNING AND AGRICULTURE
110 FIFTH STREET
SALEM, NEW JERSEY

	SICKELS &		SHERWOOD MEWS 833 KINGS HIGHWAY WOODBURY, NEW JERSEY 08096-3110 NJ CERTIFICATE OF AUTHORIZATION No. GA27994900
	ASSOCIATES, INC.		856-848-6800 FAX 848-8520
DRAWN BY: DJP	DATE: 3-5-12	SHEET: 1 of 1	
CHECKED BY: DSP	DWG: F-SALEM WMP	FILE: 5363	



LEGEND

- FOREST (RANK 3,4,5)
- GRASSLANDS (RANK 3,4,5)
- EMERGENT (RANK 3,4,5)
- WETLANDS



NOTES:

"DEVELOPMENT IN AREAS MAPPED AS WETLANDS, FLOOD PRONE AREAS, SUITABLE HABITAT FOR ENDANGERED AND THREATENED SPECIES AS IDENTIFIED ON THE DEPARTMENT'S LANDSCAPE MAPS OF HABITAT FOR ENDANGERED, THREATENED AND OTHER PRIORITY WILDLIFE AS RANK 3,4, AND 5, NATURAL HERITAGE PRIORITY SITES, RIPARIAN ZONES, STEEP SLOPES, OR DESIGNATED RIVER AREAS MAY BE SUBJECT TO SPECIAL REGULATION UNDER FEDERAL OR STATE STATUTES OR RULES, AND THAT INTERESTED PERSONS SHOULD CHECK WITH THE DEPARTMENT FOR THE LATEST INFORMATION. DEPICTION OF ENVIRONMENTAL FEATURES SHALL BE FOR GENERAL INFORMATION PURPOSES ONLY, AND SHALL NOT BE CONSTRUED TO DEFINE THE LEGAL GEOGRAPHIC JURISDICTION OF SUCH STATUTES OR RULES"

BASEMAP INFORMATION INCLUDING PARCELS, ROADS AND MUNICIPAL BOUNDARY TAKEN FROM THE SALEM COUNTY DATABASE FILE.

"THIS (MAP/PUBLICATION/REPORT) WAS DEVELOPED USING NEW JERSEY DEPARTMENT OF ENVIRONMENTAL PROTECTION GEOGRAPHIC INFORMATION SYSTEM DIGITAL DATA, BUT THIS SECONDARY PRODUCT HAS NOT BEEN VERIFIED BY NJDEP AND IS NOT STATE-AUTHORIZED."

NO.	DATE	REVISION	BY:

ENVIRONMENTAL FEATURES - MAP 5B
WETLANDS, GRASSLANDS, EMERGENT,
FOREST AREAS
TOWNSHIP OF UPPER PITTSBORO
SALEM COUNTY
WASTEWATER MANAGEMENT PLAN
SALEM COUNTY, NEW JERSEY

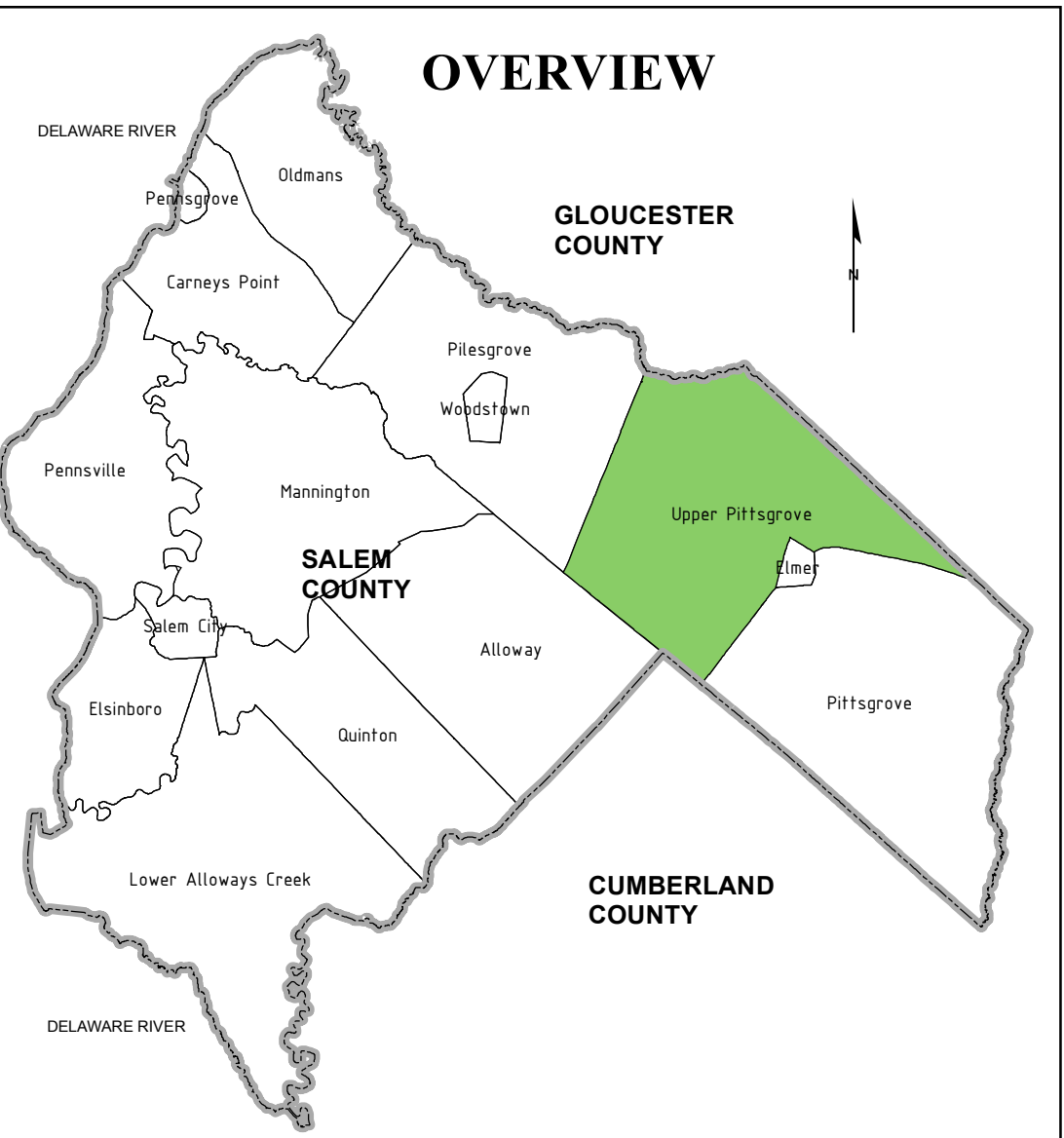
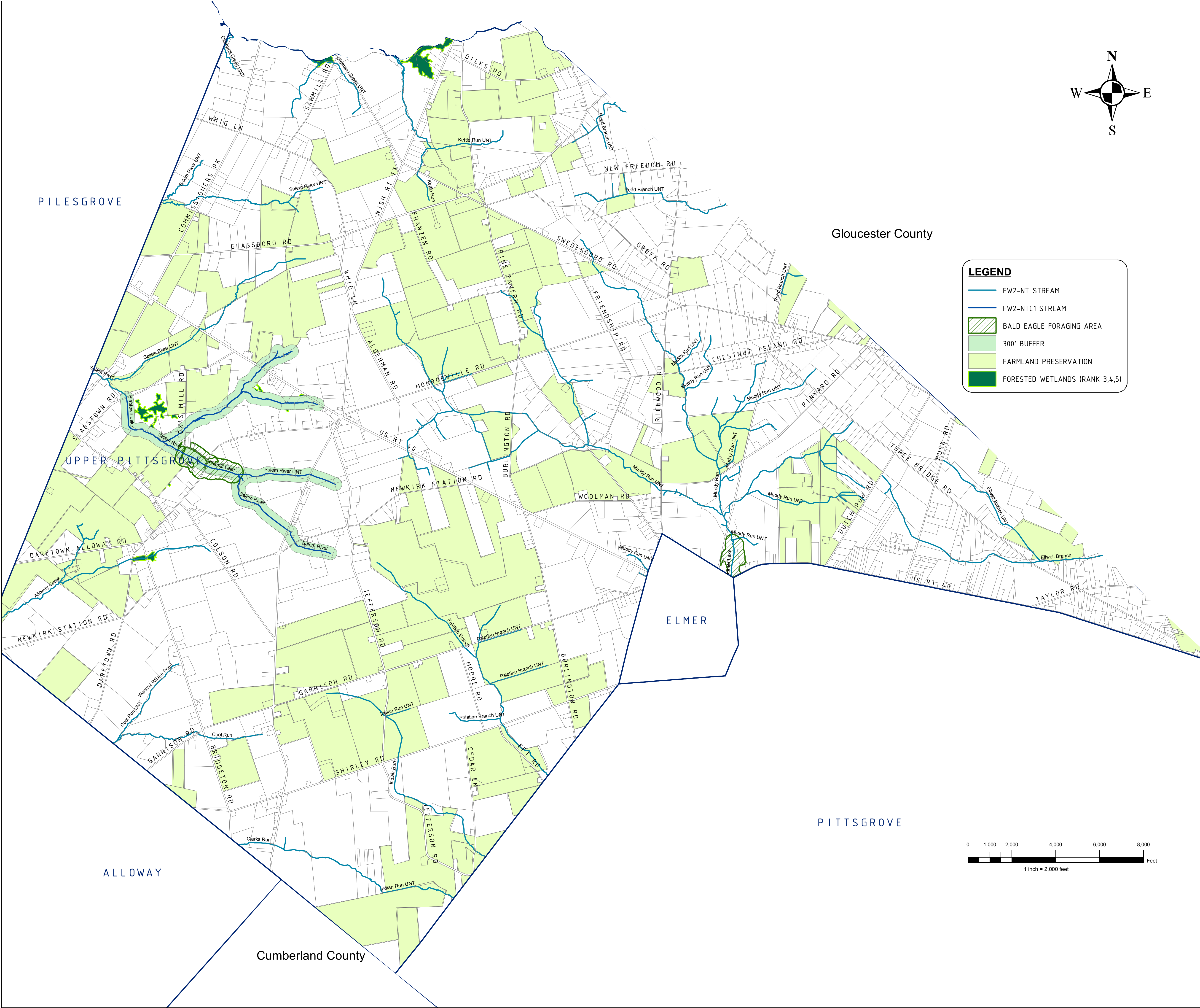


SALEM COUNTY DEPARTMENT OF
PLANNING AND AGRICULTURE
110 FIFTH STREET
SALEM, NEW JERSEY

SICKELS &
ASSOCIATES, INC.

SHERWOOD MEWS
833 KINGS HIGHWAY
WOODBURY, NEW JERSEY 08096-3110
NJ CERTIFICATE OF AUTHORIZATION
No. GA27994900
856-848-6800
FAX 848-8520

DRAWN BY: DJP	DATE: 3-5-12	SHEET: 1 of 1
CHECKED BY: DSP	DWG: F-SALEM WMP	FILE: 5363



NOTES:

"DEVELOPMENT IN AREAS MAPPED AS WETLANDS, FLOOD PRONE AREAS, SUITABLE HABITAT FOR ENDANGERED AND THREATENED SPECIES AS IDENTIFIED ON THE DEPARTMENT'S LANDSCAPE MAPS OF HABITAT FOR ENDANGERED, THREATENED AND OTHER PRIORITY WILDLIFE AS RANK 3.4. AND 5, NATURAL HERITAGE PRIORITY SITES, RIPARIAN ZONES, STEEP SLOPES, OR DESIGNATED RIVER AREAS MAY BE SUBJECT TO SPECIAL REGULATION UNDER FEDERAL OR STATE STATUTES OR RULES, AND THAT INTERESTED PERSONS SHOULD CHECK WITH THE DEPARTMENT FOR THE LATEST INFORMATION. DEPICTION OF ENVIRONMENTAL FEATURES SHALL BE FOR GENERAL INFORMATION PURPOSES ONLY, AND SHALL NOT BE CONSTRUED TO DEFINE THE LEGAL GEOGRAPHIC JURISDICTION OF SUCH STATUTES OR RULES"

BASEMAP INFORMATION INCLUDING PARCELS, ROADS AND MUNICIPAL BOUNDARY TAKEN FROM THE SALEM COUNTY DATABASE FILE.

"THIS (MAP/PUBLICATION/REPORT) WAS DEVELOPED USING NEW JERSEY DEPARTMENT OF ENVIRONMENTAL PROTECTION GEOGRAPHIC INFORMATION SYSTEM DIGITAL DATA, BUT THIS SECONDARY PRODUCT HAS NOT BEEN VERIFIED BY NJDEP AND IS NOT STATE-AUTHORIZED."

NO.	DATE	REVISION	BY:

REVISIONS

ENVIRONMENTAL FEATURES - MAP 5C FORESTED WETLANDS, BALD EAGLE FORAGING, FARMLAND PRESERVATION, 300' CATAGORY ONE BUFFER
TOWNSHIP OF UPPER PITTS GROVE

SALEM COUNTY
WASTEWATER MANAGEMENT PLAN
SALEM COUNTY, NEW JERSEY



SALEM COUNTY DEPARTMENT OF PLANNING AND AGRICULTURE
110 FIFTH STREET
SALEM, NEW JERSEY

SICKELS &
ASSOCIATES, INC.

SHERWOOD MEWS
833 KINGS HIGHWAY
WOODBURY, NEW JERSEY 08096-3110
NJ CERTIFICATE OF AUTHORIZATION
No. GA27994900
856-848-6800
FAX 848-8520

DRAWN BY: DJP	DATE: 3-5-12	SHEET: 1 of 1
CHECKED BY: DSP	DWG: F-SALEM WMP	FILE: 5363