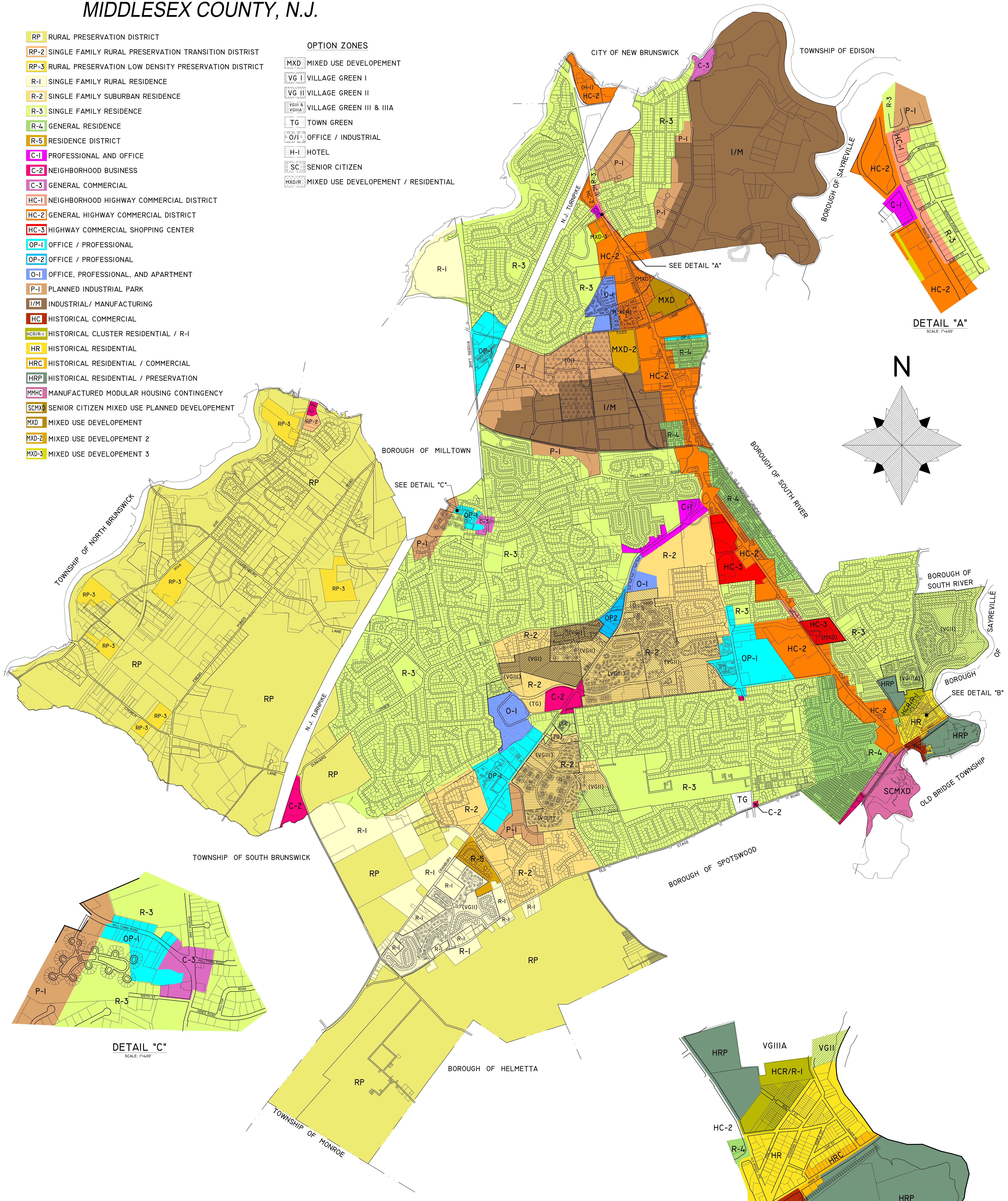


ZONING MAP  
EAST BRUNSWICK TOWNSHIP  
MIDDLESEX COUNTY, N.J.

- RP** RURAL PRESERVATION DISTRICT  
**RP-2** SINGLE FAMILY RURAL PRESERVATION TRANSITION DISTRICT  
**RP-3** RURAL PRESERVATION LOW DENSITY PRESERVATION DISTRICT  
**R-1** SINGLE FAMILY RURAL RESIDENCE  
**R-2** SINGLE FAMILY SUBURBAN RESIDENCE  
**R-3** SINGLE FAMILY RESIDENCE  
**R-4** GENERAL RESIDENCE  
**R-5** RESIDENCE DISTRICT  
**C-1** PROFESSIONAL AND OFFICE  
**C-2** NEIGHBORHOOD BUSINESS  
**C-3** GENERAL COMMERCIAL  
**HC-1** NEIGHBORHOOD HIGHWAY COMMERCIAL DISTRICT  
**HC-2** GENERAL HIGHWAY COMMERCIAL DISTRICT  
**HC-3** HIGHWAY COMMERCIAL SHOPPING CENTER  
**OP-1** OFFICE / PROFESSIONAL  
**OP-2** OFFICE / PROFESSIONAL  
**O-1** OFFICE, PROFESSIONAL, AND APARTMENT  
**P-1** PLANNED INDUSTRIAL PARK  
**I/M** INDUSTRIAL / MANUFACTURING  
**HC** HISTORICAL COMMERCIAL  
**HCR/R-1** HISTORICAL CLUSTER RESIDENTIAL / R-1  
**HR** HISTORICAL RESIDENTIAL  
**HRC** HISTORICAL RESIDENTIAL / COMMERCIAL  
**HRP** HISTORICAL RESIDENTIAL / PRESERVATION  
**MMHC** MANUFACTURED MODULAR HOUSING CONTINGENCY  
**SCMXD** SENIOR CITIZEN MIXED USE PLANNED DEVELOPMENT  
**MXD** MIXED USE DEVELOPEMENT  
**MXD-2** MIXED USE DEVELOPEMENT 2  
**MXD-3** MIXED USE DEVELOPEMENT 3

- OPTION ZONES**  
**MXD** MIXED USE DEVELOPEMENT  
**VG I** VILLAGE GREEN I  
**VG II** VILLAGE GREEN II  
**VG III & VG IIIA** VILLAGE GREEN III & IIIA  
**TG** TOWN GREEN  
**O/I** OFFICE / INDUSTRIAL  
**H-I** HOTEL  
**SC** SENIOR CITIZEN  
**MXD/R** MIXED USE DEVELOPEMENT / RESIDENTIAL



DETAIL "A"  
SCALE: 1"=400'

DETAIL "C"  
SCALE: 1"=400'

DETAIL "B"  
SCALE: 1"=400'

SCALE: 1"=1100'

REVISED	DESCRIPTION	BY
9-25-17	ORD #17-33	HA
11-28-16	ORD #16-20	KTK
12-23-15	2015 MASTER PLAN REEXAMINATION	PD
4-7-11	CHANGE RP-1 TO RP-3	KTK
3-5-10	ADD RP-1, RP-2	KTK
12-27-04	ADD ZONE MXD	KTK
3-6-04	DELETE KEY TITLE, REVISE B317.34 L23.01 TO R3	KTK
10-16-02	ADD SCMXD	KTK
1-15-02	RP MODIFICATIONS (SOUTHWEST QUADRANT)	KTK
3-21-01	CHANGE BBS LA.02 TO R-3	KTK
2-23-00	C-2 AT BASEBALL MANAGERS	KTK